



Qualität von Anfang an.

Technische Daten

BAUFORM

Das Ventil besteht aus einem Aluminiumgußkörper bzw. aus POM, einer Manschette aus einem Elastomer zumeist mit Gewebeeinlage und zwei Flanschen aus Alu oder Gewindemuffen aus POM.

Das Ventil wird geschlossen, indem die Manschette mit einem Steuermedium (Druckluft oder Preßwasser), beaufschlagt wird.

DURCHFLUSSMEDIUM

Flüssige, gasförmige, körnige, abrasive, zähe oder pastöse Medien.

BETRIEBSDRUCK

siehe Tabelle

BETRIEBSDRUCK

6 - 2 bar

Ein Sicherheitsdruckminderer ist zu verwenden, um den max. Differenzdruck nicht zu überschreiten.

STEUERMEDIUM

Luft oder Wasser

DIFFERENZDRUCK

$\Delta p = 2$ bar,

TEMPERATURBEREICH

Naturgummi +80°C
Hochtemperatur max +90°C

WERKSTOFFE

GEHÄUSE / ANSCHLUSS

Muffenausführung: Al / POM (½" - 2")
Flanschführung: Al (DN40 - DN200)
Kompaktausführung: POM (¾" - 2")

MANSCHETTENWERKSTOFFE

Naturgummi, abriebfest
Naturgummi, Lebensmittel-Qualität
Naturgummi, Hochtemperatur
(nicht für Kompaktausführung)
Andere auf Anfrage

SONDERAUSFÜHRUNGEN / ZUBEHÖR

Flanschmanschetten, Edelstahlbuchsen, POM / Edelstahlmuffen, 3/2-Wege Magnetventil

Alle Angaben sind freibleibend und unverbindlich!

Specification

DESIGN

The valve consists of an aluminum-alloy body or POM body and an elastomer sleeve, mostly reinforced by fibric inley, fixed between two flanges made of aluminium or thread bushing made of POM.

The valve is to be closed by applying a control agent, compressed air or water under pressure, to the sleeve.

MEDIA

Liquidis, gaseous, granular, abrasive, viscous and pasty media.

PRESSURE RANGE

see table

OPERATING PRESSURE

6 - 2 bar

To prevent exceeding of allowed pressure interval use of a safety reducing valve is essential.

PILOT MEDIA

Air or water

DIFFERENTIAL PRESSURE

$\Delta p = 2$ bar

TEMPERATURE RANGE

Natural rubber +80°C
High temperature max +90°C

MATERIALS

BODY / CONNECTION

Socket types: Al / POM (½" - 2")
Flange types: Al (DN40 - DN200)
Compact types: POM (¾" - 2")

SLEEVES QUALITIES

Natural rubber, abrasive
Natural rubber, food quality
Natural rubber, high temperature
(not available for compact types)
Others on request

OPTIONS / ACCESSORIES

Flange sleeve, stainless steel bushings and POM / stainless steel socket, 3/2-way solenoid valve

The above information is intended for guidance only and the company reserves the right to change any data herein without prior notice!

Artikel:
KA

Druckgesteuertes
Schlauchquetschventil
PN 6

Aluminium
POM



Type:
KA

Pressure actuated
Pinch valve
PN 6

Aluminium
POM



Alu/POM-Ausführung
Alu/POM-version

Artikel- u. Bestellangaben: z.B. KA671024

= Druckgesteuertes Schlauchquetschventil, Gehäuse = Aluminium, Manschette = Naturgummi (abriebfest), Innengewinde = G 3/4"

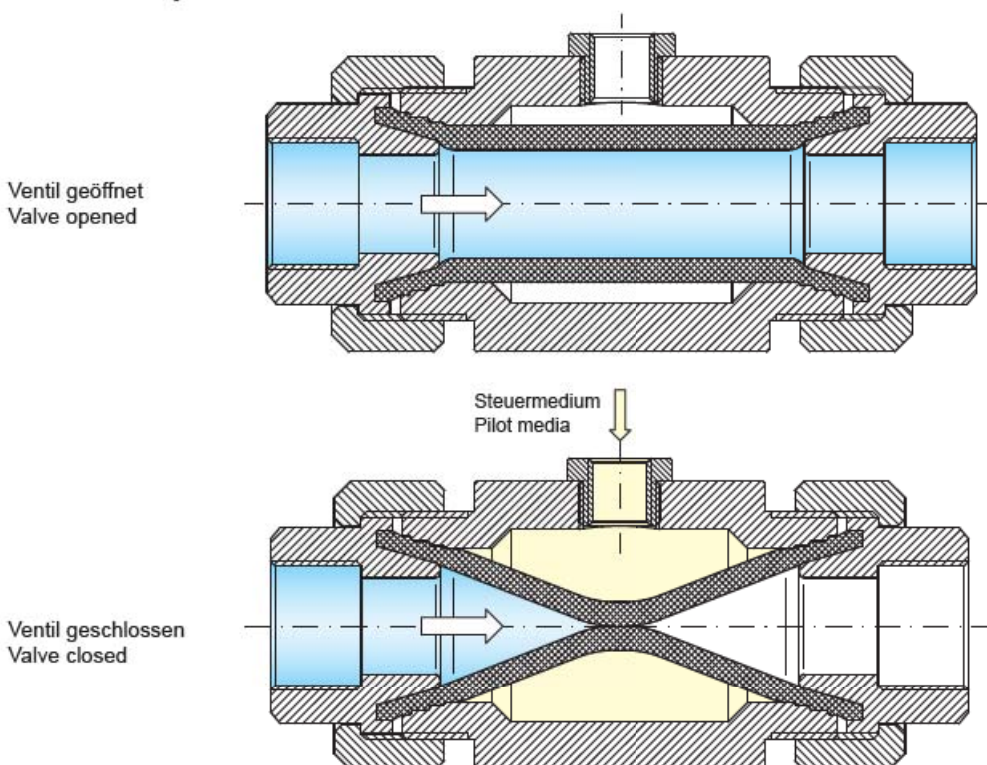
| 1. - 2. Stelle Produkt | 3. + 4. Stelle Werkstoffe Gehäuse / Manschette | 5. + 6. Stelle Betätigung | 7. + 8. Stelle Anschlußgröße | |
|---|--|------------------------------|---------------------------------|---------|
| KA = Druckgesteuertes Schlauchquetsch- ventil | 67 = Aluminium / Naturgummi, abriebfest | 10 = druckgesteuert | Gewinde | Flansch |
| | 68 = Aluminium / Naturgummi, Lebensmittel | | 22 = G 3/8 | - |
| | 69 = Aluminium / Naturgummi, Hochtemperatur | | 23 = G 1/2 | - |
| | 87 = POM / Naturgummi, abriebfest | | 24 = G 3/4 | - |
| | 88 = POM / Naturgummi, Lebensmittel | | 25 = G 1 | - |
| | | | 26 = G 1 1/4 | - |
| | | 27 = G 1 1/2 | 06 = DN 40 | |
| | | 28 = G 2 | 07 = DN 50 | |
| | | | 08 = DN 65 | |
| | | | 09 = DN 80 | |
| | | | 10 = DN 100 | |
| | | | 11 = DN 125 | |
| | | | 12 = DN 150 | |
| | | | 13 = DN 200 | |

Ordering example: e.g. KA671024

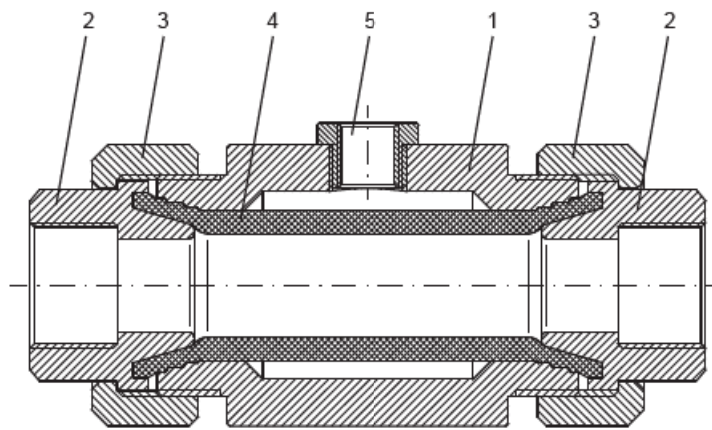
= Pressure actuated pinch valve, body = aluminium, sleeve = natural rubber (abrasion-proof, female threaded connection = G 3/4"

| 1. - 2. Digit Product | 3. + 4. Digit Materials Body / Sleeve | 5. + 6. Digit Operation | 7. + 8. Digit Connection size | |
|---------------------------------------|--|----------------------------|----------------------------------|-----------------------|
| KA = Pressure actuated Pinch valve | 67 = Aluminium / natural rubber, abrasion-proof | 10 = pressure actuated | Threaded connection | Flanged connection |
| | 68 = Aluminium / natural rubber, food version | | 22 = G 3/8 | - |
| | 69 = Aluminium / Naturgummi, high temperature version | | 23 = G 1/2 | - |
| | 87 = POM / natural rubber, abrasion-proof | | 24 = G 3/4 | - |
| | 88 = POM / natural rubber, food version | | 25 = G 1 | - |
| | | | 26 = G 1 1/4 | - |
| | | 27 = G 1 1/2 | 06 = DN 40 | |
| | | 28 = G 2 | 07 = DN 50 | |
| | | | 08 = DN 65 | |
| | | | 09 = DN 80 | |
| | | | 10 = DN 100 | |
| | | | 11 = DN 125 | |
| | | | 12 = DN 150 | |
| | | | 13 = DN 200 | |

**Funktionsbeschreibung /
Operation description**



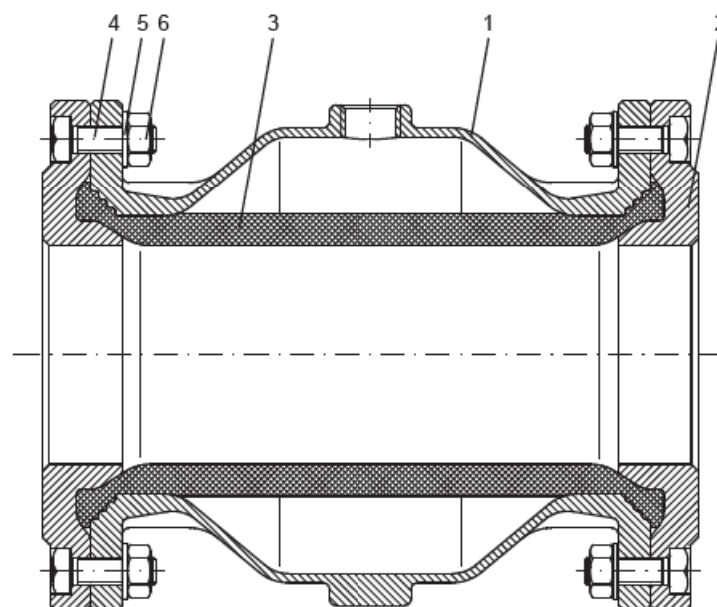
**Stückliste /
Parts list**
**Muffenausführung /
Socket types**



| Pos. | Bezeichnung / Description | | Material / Material | |
|------|---------------------------|-------------------------|--|--|
| 1 | Gehäuse | Body | <ul style="list-style-type: none"> Aluminium PVC* Edelstahl* | <ul style="list-style-type: none"> Aluminium PVC* Stainless steel |
| 2 | Anschlußende / Muffe | Connection end / socket | <ul style="list-style-type: none"> POM Edelstahl* | <ul style="list-style-type: none"> POM Stainless steel* |
| 3 | Überwurfmutter | Clamping nut | <ul style="list-style-type: none"> Aluminium PVC* Edelstahl* | <ul style="list-style-type: none"> Aluminium PVC* Stainless steel* |
| 4 | Manschette | Sleeve | <ul style="list-style-type: none"> Naturgummi, abriebfest Naturgummi, Lebensmittel Naturgummi, Hochtemperatur | <ul style="list-style-type: none"> Natural rubber, abrasion-proof Natural rubber, food version Natural rubber, high temperature version |
| 5 | Reduzierung | Bushing | <ul style="list-style-type: none"> Messing | <ul style="list-style-type: none"> Brass |

*: auf Anfrage / on request

**Flanschausführung /
Flange types**

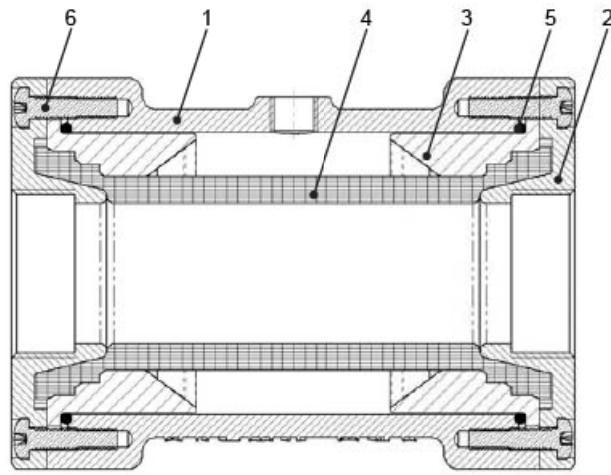


| Pos. | Bezeichnung / Description | | Material / Material | |
|------|---------------------------|-------------|--|--|
| 1 | Gehäuse | Body | <ul style="list-style-type: none"> Aluminium Edelstahl* Stahl (DN 250)* | <ul style="list-style-type: none"> Aluminium Stainless steel* Steel (DN 250)* |
| 2 | Flansch | Flange | <ul style="list-style-type: none"> Aluminiumguß Aluminiumguß mit Edel-/Stahlbuchse* Edelstahl* Stahl (DN 250)* | <ul style="list-style-type: none"> Aluminium alloy Aluminium castint with (Stainl.)steel bushing* Stainless steel* Steel (DN 250)* |
| 3 | Manschette | Sleeve | <ul style="list-style-type: none"> Naturgummi, abriebfest Naturgummi, Lebensmittel Naturgummi, Hochtemperatur | <ul style="list-style-type: none"> Natural rubber, abrasion-proof Natural rubber, food version Natural rubber, high temperature version |
| 4 | Schraube | Screw | Stahl, verzinkt | Steel, zinc-plated |
| 5 | Scheibe | Disk | Stahl, verzinkt | Steel, zinc-plated |
| 6 | Sechskantmutter | Hexagon nut | Stahl, verzinkt | Steel, zinc-plated |

*: auf Anfrage / on request

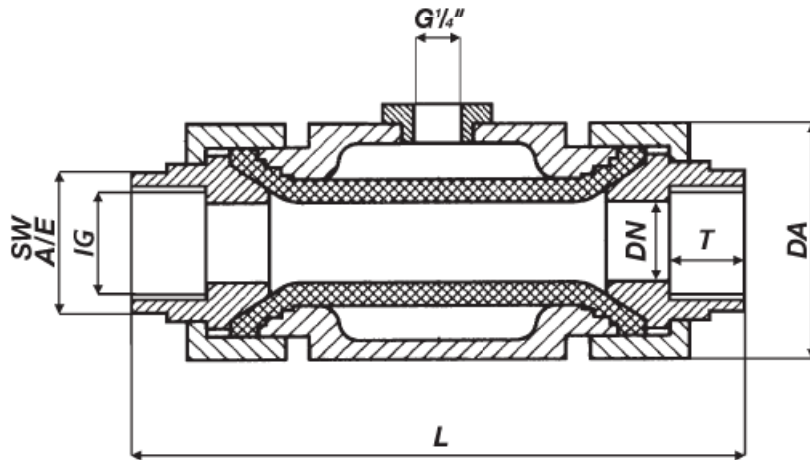
**Stückliste /
Parts list**

**Kompaktausführung /
Compact types**



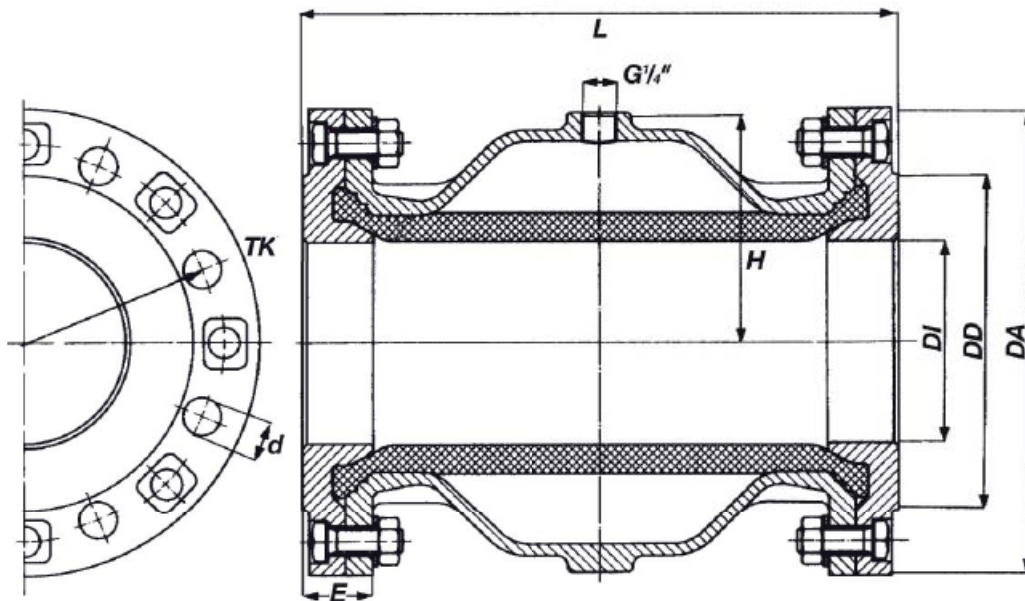
| Pos. | Bezeichnung / Description | Material / Material |
|------|-----------------------------|--|
| 1 | Gehäuse Body | • POM |
| 2 | Anschlußende Connection end | • POM |
| 3 | Pressring Presszoning | • POM |
| 4 | Manschette Sleeve | • Naturgummi, abriebfest • Naturgummi, Lebensmittel |
| 5 | Dichtung Seal | • POM |
| 6 | Schraube Screw | • Stahl, verzinkt |

**Abmessungen /
Dimensions**



| DN [mm] | IG ["] | T [mm] | SW [mm] | L [mm] | DA [mm] | PN [bar] |
|---------|--------|--------|---------|--------|---------|----------|
| 15 | ½ | 18 | 36 | 134 | 60 | 6 |
| 20 | ¾ | 19 | 36 | 140 | 60 | 6 |
| 25 | 1 | 20 | 46 | 145 | 75 | 6 |
| 32 | 1¼ | 25 | 52 | 170 | 85 | 6 |
| 40 | 1½ | 26 | 65 | 200 | 100 | 6 |
| 50 | 2 | 24 | 80 | 213 | 120 | 6 |

**Abmessungen /
Dimensions**
Flanschausführung /
Flange types



| DN [mm] | DI [mm] | DA [mm] | DD [mm] | n | TK [mm] | L [mm] | H [mm] | E [mm] | m [kg] | PS [bar] |
|---------|---------|---------|---------|---|---------|--------|--------|--------|--------|----------|
| 40 | 40 | 150 | 88 | 4 | 110 | 155 | 51 | 28 | 2,9 | 6 |
| 50 | 50 | 165 | 102 | 4 | 125 | 183 | 60 | 30 | 3,7 | 6 |
| 65 | 65 | 185 | 122 | 4 | 145 | 183 | 76 | 28 | 4,3 | 6 |
| 80 | 80 | 200 | 138 | 8 | 160 | 228 | 90 | 31 | 5,6 | 6 |
| 100 | 100 | 220 | 158 | 8 | 180 | 281 | 107 | 35 | 8,4 | 6 |
| 125 | 120 | 250 | 184 | 8 | 210 | 350 | 130 | 40 | 12,0 | 6 |
| 150 | 145 | 285 | 212 | 8 | 240 | 420 | 155 | 43 | 17,0 | 6 |
| 200 | 190 | 340 | 268 | 8 | 295 | 560 | 200 | 60 | 35,0 | 4 |

EU-Herstellererklärung / EU-Declaration by the manufacturer

im Sinne der EU-Maschinenrichtlinie 89/392/EWG, Anhang II B
Hiermit erklären wir, dass die Schlauchquetschventile unter Anwendung nachfolgender harmonisierter Normen entwickelt und konstruiert wurden:

- EN 12100 Sicherheit von Maschinen
- EN 983 Fluidtechnische Anlagen - Pneumatik
- EN 60204-1 Elektrische Ausrüstung von Maschinen

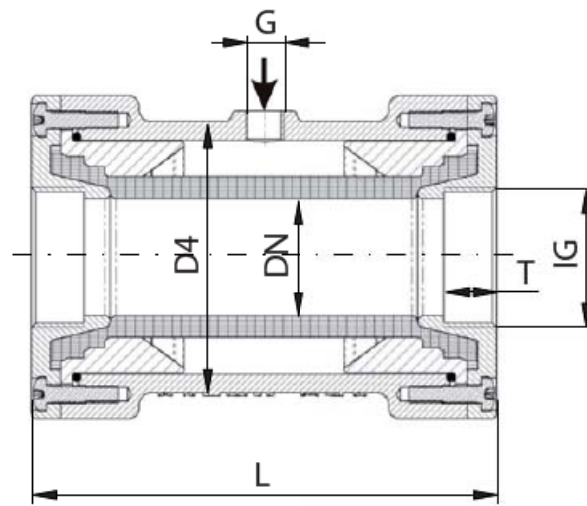
Hinweis
Die Schlauchquetschventile sind zum Einbau in eine Maschine bestimmt. Deren Inbetriebnahme ist solange untersagt, bis festgestellt wurde, dass die Gesamtmaschine der EU-Richtlinie entspricht.

as defined by Machinery Directive 89/392/EWG, Annex II B,
we herewith declare that the pinch valves have been developed and designed by applying the following harmonised standards:

- EN 12100 Safety of machinery
- EN 983 Safety requirements for fluid power systems and components - Pneumatics
- EN 60204-1 Electrical equipment of machinery

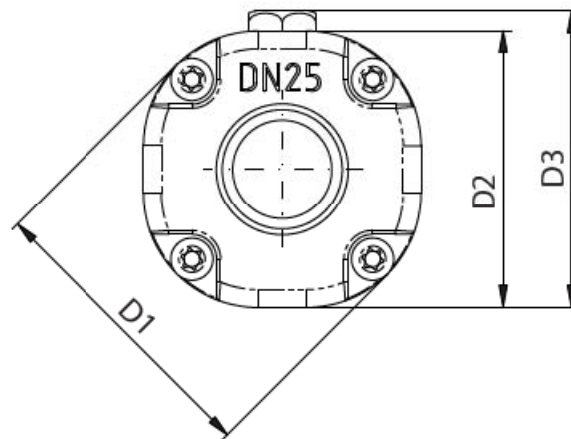
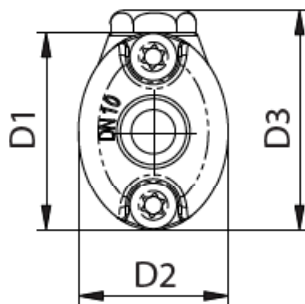
Advice
These pinch valves are intended to be incorporated into machinery compounds. Putting into operation of the machinery is not allowed until such time as the entire machinery is proving to comply completely with the EU Directive.

**Abmessungen /
Dimensions**
Kompaktausführung /
Compact types

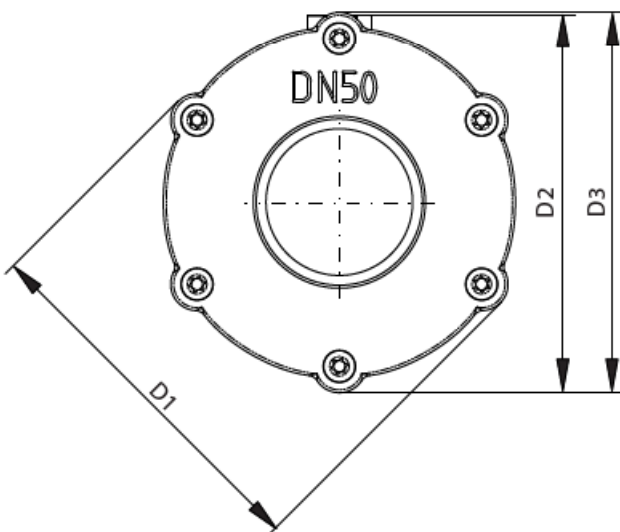


DN10 - DN15

DN20 - DN25



DN32 - DN50



| DN [mm] | IG ["] | T [mm] | L [mm] | D1 [mm] | D2 [mm] | D3 [mm] | D4 [mm] | G ["] | n | PN [bar] | m [kg] |
|------------|-----------|-----------|-----------|------------|------------|------------|------------|----------|----|-------------|-----------|
| 10 | 3/8 | 12 | 80 | 45 | 34 | 50 | 45 | 3/8 | 4 | 6 | 0,15 |
| 15 | 1/2 | 14 | 95 | 55 | 46 | 60 | 55 | 1/2 | 4 | 6 | 0,25 |
| 20 | 3/4 | 17 | 103 | 63 | 56 | 62,5 | 56 | 3/4 | 8 | 6 | 0,35 |
| 25 | 1 | 17 | 120 | 75 | 70 | 75 | 70 | 1 | 8 | 6 | 0,50 |
| 32 | 1 1/4 | 18 | 135 | 90 | 98 | 97 | 77 | 1 1/4 | 8 | 4,5 | 0,65 |
| 40 | 1 1/2 | 18 | 160 | 103 | 111 | 110,5 | 93 | 1 1/2 | 8 | 4,5 | 1,00 |
| 50 | 2 | 24 | 170 | 120 | 130 | 129 | 113 | 2 | 12 | 4,5 | 1,50 |